

BATIPA FIELD INSTITUTE – Research and Education for Conservation and Sustainability

Mission:

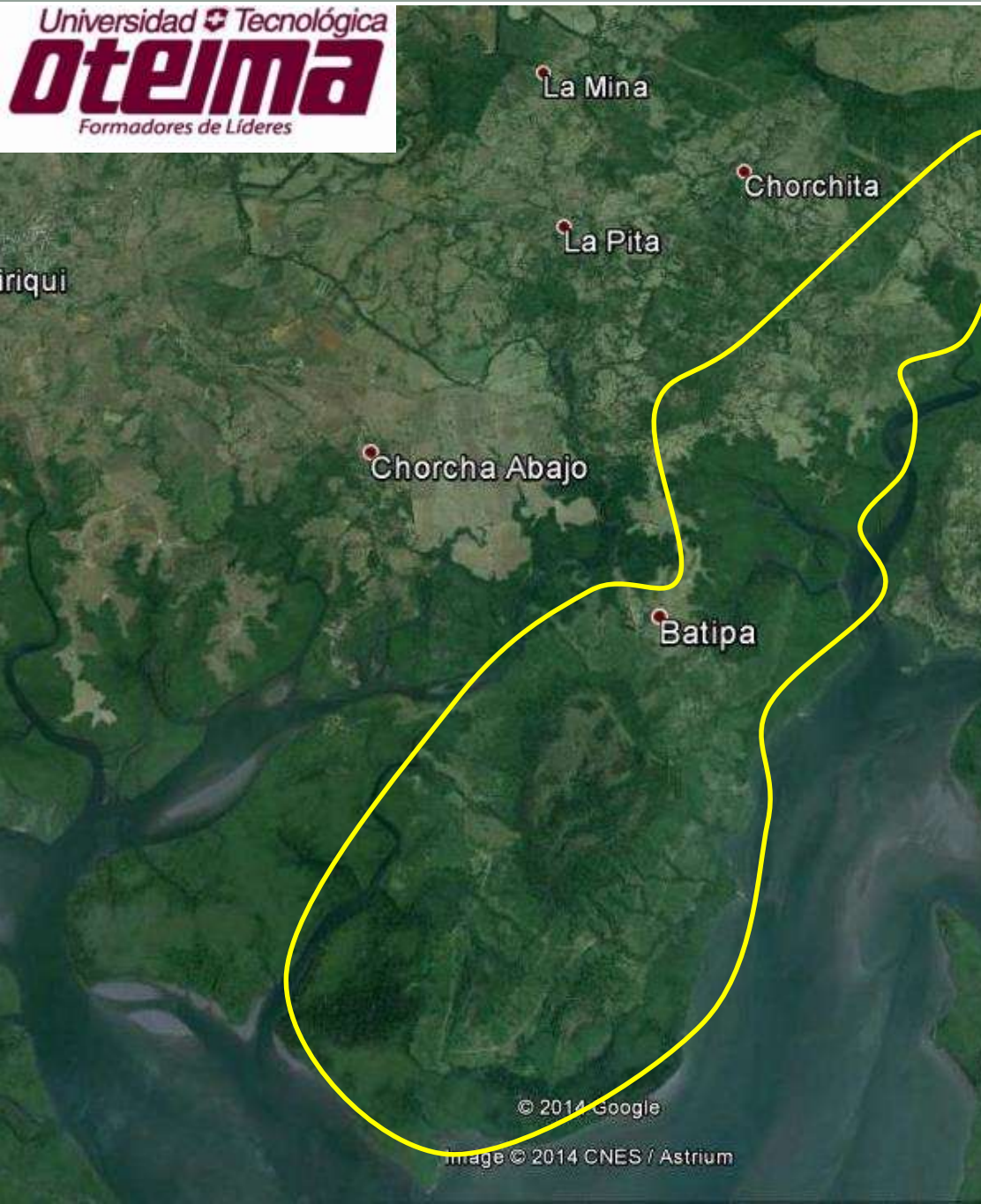
Applying science and
education for the conservation
and sustainable management
of natural resources

Presented to the Oteima Board of Directors by
Dr. Russ Mullen, Iowa State University -
Consultant to Oteima University under the
Fulbright program from USA Embassy

The Batipa – Oteima Advantage for Western Panama



- **Linking university accredited programs with a field institute**
- **Building educational and research capacity for Western Panama**



Why Batipa?

- **2000 ha area**
- **1000 ha = Teak production**
- **600 ha = Wildlife Preserve that includes corridors**
- **400 ha = pasture land and bovine reproduction center**



Cordillera Central

Boquete

Chiriqui

David District

Mesoamerican Biological Corridor

Corridor Altitudinal de Gualaca

Ngöbe Buglé

Batipa

Batipa has natural beauty and attraction for visitors



Batipa has abundant Neotropical biodiversity



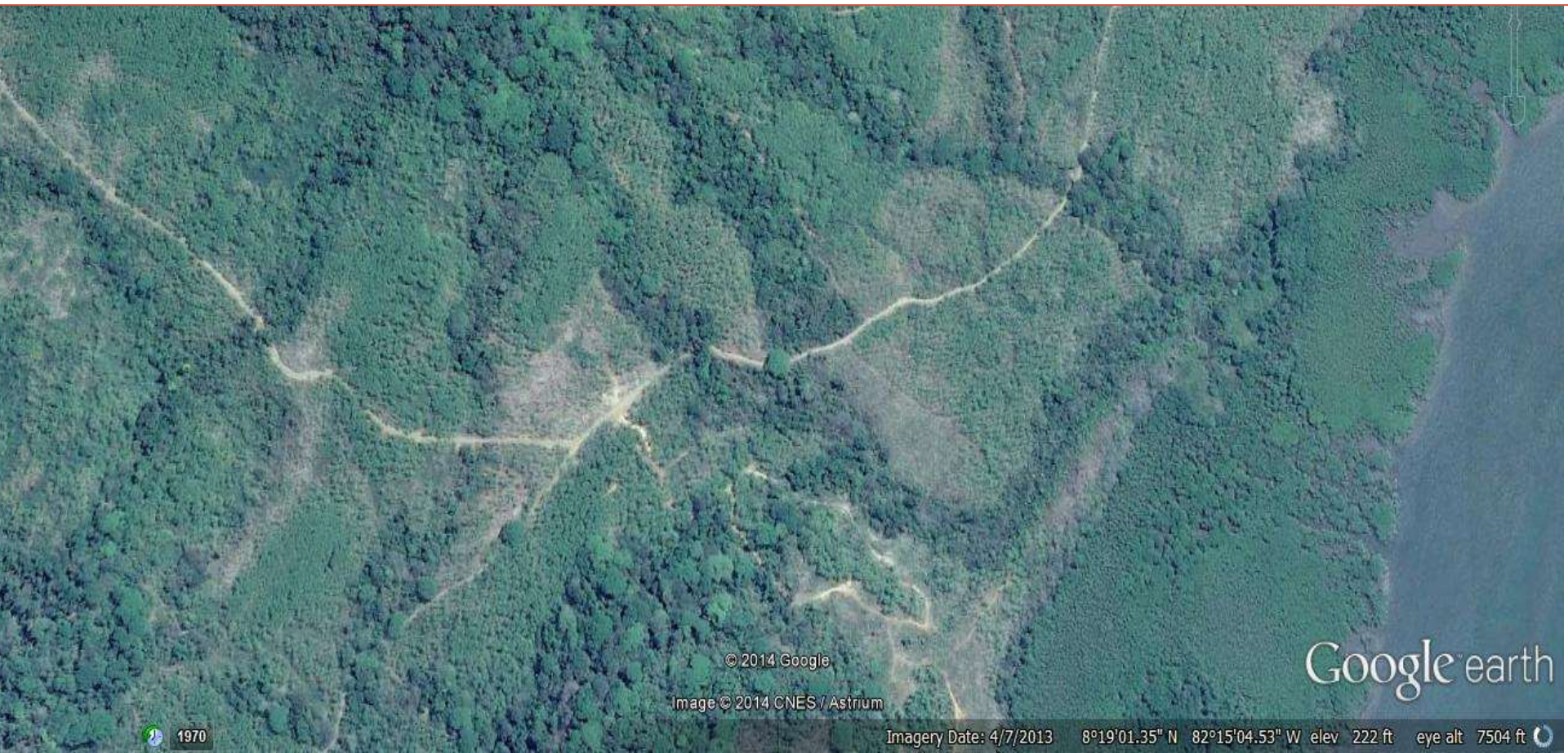
25 km of roads and trails



Batipa Teak & Cattle = “Entrepreneurship”



Batipa Teak Population Density & Wildlife Corridors = “Commitment”



Batipa Bovine Reproduction Center and Breeding Improvement = “Commitment”



Batipa is developing host site accommodations for research and education programs



Batipa will attract people interested in conservation and sustainable management of natural resources



Why Oteima University?

An educational institution with fast-track performance in education programs



- **Began in 1985 as educational center and grew to university status in 2005**
- **University Accredited in 2013**
- **Currently offers over 20 different educational programs**
- **Offers 3 Master degree programs.**
- **Offers international study abroad programs**

Why a Field Institute?

- Field based learning focus for educational programs
- A natural field laboratory for scientific studies
- Student feedback indicates preferred setting for applied science programs
- Batipa Field Institute is a good model to
 - strengthen local institutional capacity
 - build conservation and sustainable awareness in managing resources in Panama
 - collaborate and support international efforts in research and education
 - bypass bureaucracy and organizational obstacles for research and educational programs (e.g. Smithsonian Institute)

Building Panama's Own Research and Educational Capacity

From Wikipedia:

“The Smithsonian Institution, established in 1846 for the increase and diffusion of knowledge, is a group of museums and research centers administered by the United States government.”

BATIPA FIELD INSTITUTE - Research and Education for Conservation and Sustainability is a way for Panama to build its own international visibility and capacities for research and education

The Batipa – Oteima Advantage for Western Panama



- Linking education and research for building local capacities and improvement
- Organizational performance and commitment to education, research and conservation.

BATIPA FIELD INSTITUTE – Research and Education for Conservation and Sustainability

Much has been done already
Funding is now needed to:

- Offer 1-week to 3-month field-based courses
- Create local student scholarships for BFI programs
- Create matching funds for international collaborative research studies with Panamanian scientists and students
- Build local support services and facilities to host students and researchers at the BFI in conservation and sustainable management studies